

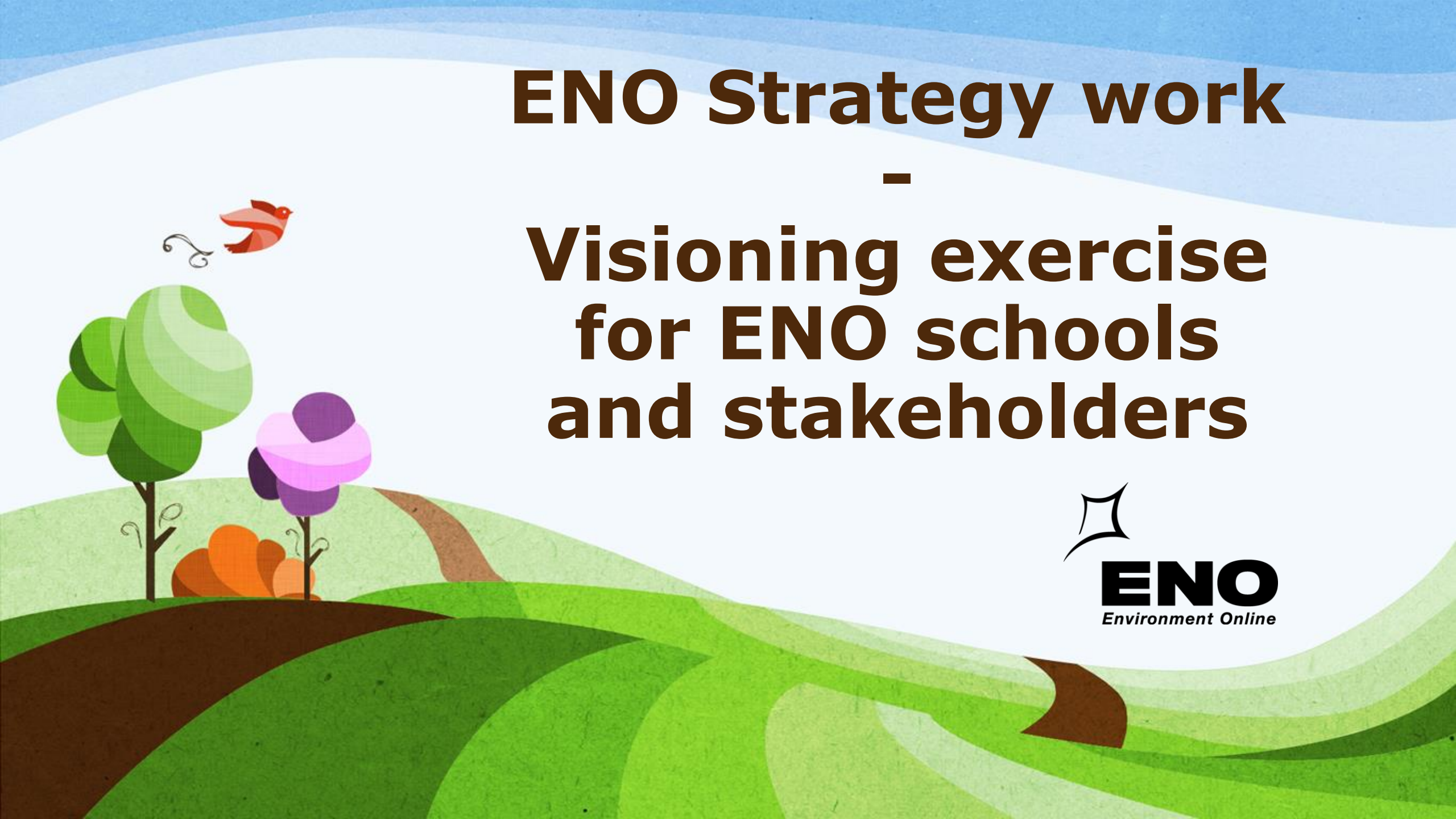
ENO Strategy work

-

Visioning exercise for ENO schools and stakeholders



ENO
Environment Online



VISION

1 December-7 March

School tasks facilitated
by coordinators and
teachers

Input from stakeholders

FB poll for whole ENO
community

Preliminary Vision

MISSION

8 March – 11 April

School tasks facilitated
by coordinators and
teachers

Input from stakeholders

FB poll for whole ENO
community

Preliminary Mission

VALUES

12 April – 16 May

School tasks facilitated
by coordinators and
teachers

Input from stakeholders

Value discussion online

FB poll for whole ENO
community

Preliminary Values

STRATEGY

17 May- 13 June

SWOT analysis with
coordinators and
stakeholders

Ways to go from
present to future
(coordinators and
teachers with schools
and stakeholders)

Finalisation of process

June-August 2021

Compilation of ways to
the future, discussion
and agreement of ways
forward

Proposal to ENO Board
on the Vision, Mission,
Values and Strategy

Vision, Mission, Values
and Strategy published!

VISION

- *What we want to become*
- *Our dream*
- *A picture of the future*

Visioning exercise: Media exercise

- *Shortly go through the ENO activities you have participated in. If you have not participated in ENO activities yet, imagine you have.*
- *This exercise can be done in a group size of your own choosing. For smaller students, a large group might work better. You can also do this by yourself.*
- *Imagine it is 15 January 2030*
- *You open a newspaper/listen to the radio/watch the news/etc and find a story about ENO*
- *What does the story tell you about ENO in 2030?*
- *What has your local school done with ENO in January 2030?*
- *Who participated? What did you achieve? What happens next?*
- *Choose your media format. It can be a newspaper article, a radio interview, a tv news flash, a picture collage, a play or whatever media you choose*

Sending instructions

- Please send the media file(s) to strategy@enoprogramme.org by 28 February 2021. We will compile these into key phrases or themes and present them to the ENO community for choosing
- Together with the file, please send some basic information of the participants
 - number of participants, age distribution, whether the participants are students/teachers/ngos/school admin/etc, place and country, any other relevant information
- a note whether the material can be published on our website or social media. If the material includes pictures or video of people, please make sure they also consent to their picture being published

A stylized landscape illustration. In the foreground, there are rolling green hills. On the left, a purple and pink flower with a brown stem and small orange flowers at its base sits on a hill. The background consists of layered, wavy bands of light blue and white, suggesting a sky or distant hills.

**Thank you for
participating in the
ENO strategy process!**

www.enoprogramme.org

kaija.saramaki@enoprogramme.org
strategy@enoprogramme.org